



Self-propulsion in viscoelastic fluids: Pushers vs. pullers

Lailai Zhu, Eric Lauga, and Luca Brandt

Citation: *Physics of Fluids* **24**, 051902 (2012); doi: 10.1063/1.4718446

View online: <http://dx.doi.org/10.1063/1.4718446>

View Table of Contents: <http://scitation.aip.org/content/aip/journal/pof2/24/5?ver=pdfcov>

Published by the [AIP Publishing](#)

Articles you may be interested in

[Mixed convection flow of viscoelastic fluid over a sphere with constant heat flux](#)

AIP Conf. Proc. **1522**, 453 (2013); 10.1063/1.4801161

[On self-similarity in the drop-filament corner region formed during pinch-off of viscoelastic fluid threads](#)

Phys. Fluids **24**, 083101 (2012); 10.1063/1.4745179

[Elastic encapsulation in bicomponent stratified flow of viscoelastic fluids](#)

J. Rheol. **52**, 1027 (2008); 10.1122/1.2933436

[Viscoelastic effects on drop deformation in a converging pipe flow](#)

J. Rheol. **52**, 469 (2008); 10.1122/1.2837525

[Transient and steady-state solutions of 2D viscoelastic nonisothermal simulation model of film casting process via finite element method](#)

J. Rheol. **51**, 393 (2007); 10.1122/1.2714781



Self-propulsion in viscoelastic fluids: Pushers vs. pullers

Lailai Zhu,^{1,a)} Eric Lauga,² and Luca Brandt¹

¹*Linné Flow Centre, KTH Mechanics, S-100 44 Stockholm, Sweden*

²*Department of Mechanical and Aerospace Engineering, University of California San Diego, 9500 Gilman Drive, La Jolla, California 92093-0411, USA*

(Received 13 November 2011; accepted 12 April 2012; published online 22 May 2012)

We use numerical simulations to address locomotion at zero Reynolds number in viscoelastic (Giesekus) fluids. The swimmers are assumed to be spherical, to self-propel using tangential surface deformation, and the computations are implemented using a finite element method. The emphasis of the study is on the change of the swimming kinematics, energetics, and flow disturbance from Newtonian to viscoelastic, and on the distinction between pusher and puller swimmers. In all cases, the viscoelastic swimming speed is below the Newtonian one, with a minimum obtained for intermediate values of the Weissenberg number, We . An analysis of the flow field places the origin of this swimming degradation in non-Newtonian elongational stresses. The power required for swimming is also systematically below the Newtonian power, and always a decreasing function of We . A detail energetic balance of the swimming problem points at the polymeric part of the stress as the primary We -decreasing energetic contribution, while the contributions of the work done by the swimmer from the solvent remain essentially We -independent. In addition, we observe negative values of the polymeric power density in some flow regions, indicating positive elastic work by the polymers on the fluid. The hydrodynamic efficiency, defined as the ratio of the useful to total rate of work, is always above the Newtonian case, with a maximum relative value obtained at intermediate Weissenberg numbers. Finally, the presence of polymeric stresses leads to an increase of the rate of decay of the flow velocity in the fluid, and a decrease of the magnitude of the stresslet governing the magnitude of the effective bulk stress in the fluid. © 2012 American Institute of Physics. [<http://dx.doi.org/10.1063/1.4718446>]

I. INTRODUCTION

The physical mechanisms of microorganism locomotion accompany a variety of natural phenomena, including human spermatozoa approaching the ovum in the mammalian female reproductive tract,¹ algal blooms moving to nutrient rich environment in maritime regions,^{2,3} biofilm formation,⁴ and paramecia cells escaping from their predators.⁵ Much work has been done to shed light on the different physical mechanisms at play in the locomotion of microorganisms, including classical kinematics studies,^{6–9} nutrients uptake,^{10,11} collective behavior,^{12–16} and hydrodynamic interactions.^{17–19}

Most past work has however been limited to the study of locomotion in Newtonian fluids, whereas in many biological instances microorganisms swim in complex polymeric fluids. Several groups have recently started to address the effect of viscoelasticity on the locomotory features and hydrodynamic performance of swimming microorganisms. Lauga²⁰ investigated the kinematics and energetics of Taylor's waving sheet in various model non-linear polymeric fluids and found that, for a given waving stroke, viscoelasticity impeded the locomotion of the swimming sheet. Similarly, Fu *et al.*²¹ derived analytically that the swimming speed of an infinite filament with a

^{a)}lailai@mech.kth.se.

prescribed waveform will decrease in Oldroyd-B fluid compared to the Newtonian case. Teran *et al.*²² numerically studied the influence of viscoelasticity on the dynamics of a finite-length Taylor's waving sheet and showed that the swimming speed and efficiency can actually increase within a certain range of polymer relaxation time and sheet waveforms. Recently, Shen *et al.*²³ experimentally demonstrated that fluid elasticity hindered the self-propulsion of the nematode *Caenorhabditis elegans*, primarily due to polymeric stretching near hyperbolic points in the viscoelastic flow.

In our previous work,²⁴ we carried out three-dimensional axisymmetric simulations to study the effect of viscoelasticity on the locomotion speed and energy consumption of a spherical squirmer swimming by tangential surface deformations, as a model of ciliated protozoa. A non-linear viscoelastic model (Giesekus) was used to describe the polymer dynamics. We showed the dependency of swimming speed, power consumption, and swimming efficiency on the fluid elasticity. This work was however restricted to the most energetically efficient swimming gait, one associated with no vortices generated around the cell in the Newtonian case (a potential flow squirmer in the Newtonian limit).

In the current paper, we numerically investigate the hydrodynamic performance of a squirmer utilizing other swimming gaits in a viscoelastic fluid. The gaits correspond to pusher and puller swimmers, a natural distinction for biological organisms. We assume the gait to be steady and thus ignore, as a first model, the oscillatory flow field around a swimming cell. As recently shown by Guasto *et al.*²⁵ and Drescher *et al.*,²⁶ the flow field generated by some microorganisms such as *Chlamydomonas reinhardtii* cannot be accurately described by a steady analysis, and in fact, the flow generated by many swimmers is usually time-periodic, with large fluctuations around the mean. However, the simple steady model we utilize here has been used to understand several fundamental processes related to the physics of swimming microorganisms, such as nutrient uptake,²⁷ locomotion in stratified fluid,²⁸ biomixing,²⁹ and the collective behavior of microorganisms.^{14,30} Note that in the case of viscoelastic fluids like those studied here, the presence of an additional time scale (stroke frequency) leads to the definition of a Deborah number, different from the Weissenberg number defined below based on shear rates, and possibly leading to a rich dynamical behavior.

The paper is organized as follows. We first investigate in detail how fluid elasticity affects the swimming speed of the spherical model cells applying different locomotive gaits and the resulting polymeric dynamics in the flow field. We then analytically derive a decomposition of the power associated to cell locomotion by surface deformation in the viscoelastic fluid, extending the analysis presented for the Newtonian fluid in Ref. 7. We further compute the change in the swimming speed of the squirmer in the viscoelastic fluid under constant-power conditions, as well as the hydrodynamic efficiency. Finally, in order to quantify the influence of the squirming motion on nearby swimmers as well as on the bulk stress of the surrounding fluid, we analyze the velocity decay around the model swimming cells and calculate their effective stresslets.

II. MATHEMATICAL MODEL

A. Squirmer model

In this so-called envelope approach, first proposed by Blake,⁹ one assumes the squirmer imposes a non-zero tangential velocity on its surface, \mathbf{u}_S , in the co-moving frame. Here, we adopt the concise formulation introduced in Ref. 14

$$\mathbf{u}_S(\mathbf{r}) = \sum_{n \geq 1} \frac{2}{n(n+1)} B_n P'_n \left(\frac{\mathbf{e} \cdot \mathbf{r}}{r} \right) \left(\frac{\mathbf{e} \cdot \mathbf{r}}{r} \frac{\mathbf{r}}{r} - \mathbf{e} \right), \quad (1)$$

where \mathbf{e} is the orientation vector of the squirmer, B_n is the n th mode of the surface squirming velocity,⁹ P_n is the n th Legendre polynomial, \mathbf{r} is the position vector, and $r = |\mathbf{r}|$. In a Newtonian fluid, the swimming speed of the squirmer is $U_{\text{New}} = 2B_1/3$ (Ref. 9) and thus only dictated by the first mode. As in many previous studies,^{10,14,17,19} we assume $B_n = 0$ for $n \geq 3$. The tangential velocity on the sphere in the co-moving frame is therefore expressed as $u_\theta(\theta) = B_1 \sin \theta + (B_2/2) \sin 2\theta$, where $\theta = \arccos(\mathbf{e} \cdot \mathbf{r}/r)$. We introduce an additional parameter α , representing the ratio of the second to the first squirming mode, thus $\alpha = B_2/B_1$. When α is positive, the swimmer get impetus from its front

part, and is termed a puller (swimmers in this category include the alga genus *Chlamydomonas*). As a difference, when α is negative, the thrust comes from the rear part of the body and the swimmer is a pusher (swimmers in this category include all peritrichous bacteria such as *Escherichia coli*). If not otherwise stated, here we will present results obtained with $\alpha = -5$ (simply denoted as pusher), $\alpha = 5$ (puller), and $\alpha = 0$ (neutral squirmer inducing a potential velocity field in the Newtonian case).

B. Polymeric dynamics

For steady incompressible low-Reynolds number flow in a viscoelastic fluid, the momentum and continuity equation are written as

$$-\nabla p + \nabla \cdot \boldsymbol{\tau} = 0, \quad (2)$$

$$\nabla \cdot \mathbf{u} = 0. \quad (3)$$

The velocity is scaled by B_1 – related by the expressions above to the magnitude of the velocity of the boundary and to the swimming speed – while lengths are scaled by the diameter of the spherical swimmer D , time is scaled by D/B_1 , and pressure and stresses are scaled by $\mu B_1/D$, where μ is the coefficient of viscosity.

Following classical modeling approaches,^{31–33} the deviatoric stress $\boldsymbol{\tau}$ is split into two components, the viscous solvent stress ($\boldsymbol{\tau}^s$) and the polymeric stress ($\boldsymbol{\tau}^p$), so $\boldsymbol{\tau} = \boldsymbol{\tau}^s + \boldsymbol{\tau}^p$. The stress $\boldsymbol{\tau}^s$ is governed by Newton's law of viscosity, thus is formulated as

$$\boldsymbol{\tau}^s = \beta(\nabla \mathbf{u} + \nabla \mathbf{u}^T), \quad (4)$$

where $\beta < 1$ represents the ratio of the solvent viscosity, μ_s , to the total zero shear rate viscosity, μ , of the solution. To close the model, a transport equation for the polymeric stress $\boldsymbol{\tau}^p$ is required. Here, we adopt the non-linear Giesekus model,³⁴ which, in addition to displaying shear-thinning material properties (viscosity and normal stress differences), provides two important features, namely, saturation of polymer elongation, and a non-negative entropy production during the time evolution of the polymers (see details in Refs. 35–37). Violation of these two properties may cause non-physical flow behavior as well as numerical difficulties. The nondimensional constitutive equation for this model can be written as

$$\boldsymbol{\tau}^p + We \overset{\nabla}{\boldsymbol{\tau}}^p + \frac{We \alpha_m}{1 - \beta} (\boldsymbol{\tau}^p \cdot \boldsymbol{\tau}^p) = (1 - \beta)(\nabla \mathbf{u} + \nabla \mathbf{u}^T), \quad (5)$$

where $\overset{\nabla}{\mathbf{A}}$ denotes the upper-convected derivative, defined for a tensor \mathbf{A} by

$$\overset{\nabla}{\mathbf{A}} = \frac{\partial \mathbf{A}}{\partial t} + \mathbf{u} \cdot \nabla \mathbf{A} - \nabla \mathbf{u}^T \cdot \mathbf{A} - \mathbf{A} \cdot \nabla \mathbf{u}. \quad (6)$$

In the constitutive equation for the polymeric stress, Eq. (5), We denotes the Weissenberg number, defined as $We = \lambda B_1/D$, where λ is the polymer relaxation time. The so-called mobility factor α_m is introduced in the non-linear stress term to represent an anisotropic hydrodynamic drag on the polymer molecules³¹ and limits the extensional viscosity of the fluid. From thermodynamics considerations, the mobility factor α_m must be in the 0 to 1/2 range,^{31,38} and in this paper, we assume $\alpha_m = 0.2$.

III. NUMERICAL METHOD

A numerically stable and accurate finite element model is built, based on the formulation denoted discrete elastic-viscous split stress (DEVSS-G).^{39,40} The governing equations are rewritten as

$$\nabla \cdot \mu_a(\nabla \mathbf{u} + \nabla \mathbf{u}^T) - \nabla p + \nabla \cdot \boldsymbol{\tau}^p - \nabla \cdot (\mu_a - \beta)(\mathbf{G} + \mathbf{G}^T) = 0, \quad (7)$$

where an additional tensor $\mathbf{G} \equiv \nabla \mathbf{u}$ is introduced as an independent interpolation of the velocity gradient tensor $\nabla \mathbf{u}$ and an additional elliptic term $\nabla \cdot \mu_a(\nabla \mathbf{u} + \nabla \mathbf{u}^T) - \nabla \cdot \mu_a(\mathbf{G} + \mathbf{G}^T)$ is added

into the momentum equation.⁴¹ In our computations, μ_a is chosen to be 1 as in Liu *et al.*,⁴⁰ and the velocity gradient term in equation for the polymeric stress, Eq. (5), is approximated by \mathbf{G} .

A Galerkin method is used to discretize the momentum equations, continuity equation, and the equation for the additional unknown \mathbf{G} . We use quadratic elements for \mathbf{u} and linear elements for both p and \mathbf{G} . To improve the numerical stability, the streamline-upwind/Petrov-Galerkin⁴² method is used to discretize the constitutive equation, Eq. (5). Finally, the weak form for the constitutive equations is written as

$$\left\{ \mathbf{S} + \frac{h}{U_C} \mathbf{u} \cdot \nabla \mathbf{S}, \quad \boldsymbol{\tau}^p + We(\mathbf{u} \cdot \nabla \boldsymbol{\tau}^p - \mathbf{G}^T \cdot \boldsymbol{\tau}^p - \boldsymbol{\tau}^p \cdot \mathbf{G} + \frac{\alpha_m}{1-\beta} (\boldsymbol{\tau}^p \cdot \boldsymbol{\tau}^p)) \right. \\ \left. - (1 - \beta)(\mathbf{G} + \mathbf{G}^T) \right\} = 0, \quad (8)$$

where \mathbf{S} denotes the test function for $\boldsymbol{\tau}^p$, h is the characteristic length-scale of the element and U_C is the magnitude of the local characteristic velocity. In our case, we choose the norm of \mathbf{u} as the value of U_C . The finite-element framework for our implementation is provided by the commercial software COMSOL.

We perform three-dimensional axisymmetric simulations on a two-dimensional mesh. Triangle elements are used for all the simulations and the number of elements are dependent on the swimming gait. We generate sufficiently refined mesh in regions with high magnitude of polymeric stress to overcome numerical instabilities.^{43,44} In all cases, high resolution near the cell body is required in order to resolve the thin stress boundary layers. Fine meshes are also necessary to capture the high polymer elongation rates. Typical mesh size at the cell boundary is 5×10^{-4} of the reference (swimmer) length. The total number of elements used for the results reported here ranges from 1 50 000 to 2 50 000.

The numerical implementation is first validated against the theoretical results for the swimming speed and power of squirmers of different gaits in Newtonian fluids.⁹ For viscoelastic fluids, we validate the present numerical approach against the simulations in Ref. 45 of a sphere sedimenting in a tube filled with an Oldroyd-B fluid (the mobility factor α_m equals to zero) and against the results in Ref. 46, where the authors numerically study the negative wake of a sphere sedimenting in a tube filled with a Giesekus fluid.

IV. SWIMMING SPEED IN VISCOELASTIC FLUIDS

To illustrate the difference between the swimming modes considered, the flow fields generated by a pusher and a puller in a Newtonian fluid are shown in Fig. 1, where data for the pusher are displayed on the left of each panel, and those for the puller on the right. Vectors display the in-plane velocity magnitude and direction while the background color indicates velocity magnitudes. We see an axisymmetric vortex ring generated in the front of the pusher and behind the puller; as a difference the neutral swimmer generates a symmetric velocity field with no vorticity.²⁴

To address the dynamics in a viscoelastic fluid, we first examine the dependency of the squirmer swimming speed, U , on the Weissenberg number, We . The swimming speed is computed as in Ref. 24. Simulations are performed in the co-moving frame with different values of the inflow velocity, and the total force on the body is computed. The swimming speed is then estimated by interpolating to the inflow velocity yielding zero net force on the swimmer. A new simulation is then performed to ensure that the value of the predicted swimming speed used as free-stream velocity indeed gives values of the total force below a given tolerance. The numerical results are shown in Fig. 2, for three different swimming gaits, where the swimming speed is scaled with the speed of the Newtonian squirmer, $U_{\text{New}} = 2B_1/3$.

Considering the data in Fig. 2, we first observe that viscoelasticity clearly distinguishes between the three swimming gaits in terms of U , while they produce the same swimming speed in the Newtonian fluid. The neutral gait, $\alpha = 0$, generally gives the highest value of U for most We numbers while pushers generally have the lowest velocity. Second, for all the gaits and We numbers considered here, the swimming speed of swimmers in the viscoelastic fluid is lower than that of swimmers in the Newtonian fluid. Finally, for all three gaits, U systematically displays a minimum in

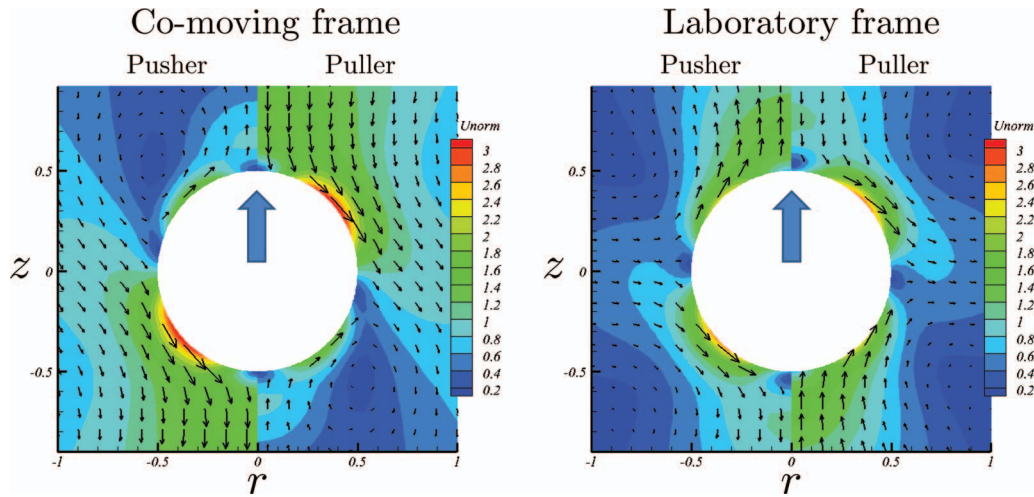


FIG. 1. Vector plot of flow fields generated by pusher and puller squirmers in a Newtonian fluid. Left: co-moving frame. Right: laboratory frame. On each panel, the data for the pusher are displayed on the left, and those for the puller on the right. The large arrow (blue) indicates the swimming direction and the background color scheme indicates the velocity magnitudes.

the range of We considered. The swimming speed initially decreases as We increases from 0, while it eventually always increase for the largest values of We . The value of the Weissenberg number corresponding to the minimum swimming speed varies with the gait: it increases from 0.5 to 4 when moving from puller to neutral to pusher.

Different swimming gaits generate different polymer dynamics around the swimmer and this, in turn, influences the swimming speed as shown above. To gain insight into the numerical results, we start by showing in Fig. 3 the distribution of axial polymeric stress, τ_{zz} , for the neutral swimmer ($\alpha = 0$) in the cases $We = 0.1$ and $We = 2$. The value $We = 0.1$ is chosen since it is close to the Newtonian case ($U = 0.987$), while U is close to the minimum swimming speed when $We = 2$. As seen in the figure, there exists a significant difference in the τ_{zz} distribution behind the swimmer. In the case $We = 2$, the magnitude of τ_{zz} is much higher, indicating a higher extent of polymer stretching in this region. As suggested in Fig. 1, an elongational flow³¹ is generated aft the cell body. In the viscoelastic fluid, such flow would be responsible for polymer stretching which in return increases the local elongational viscosity,^{47,48} yielding a strong elastic resistance against locomotion. We further see in Fig. 3 that, upon increasing the polymer relaxation time to $We = 6$,

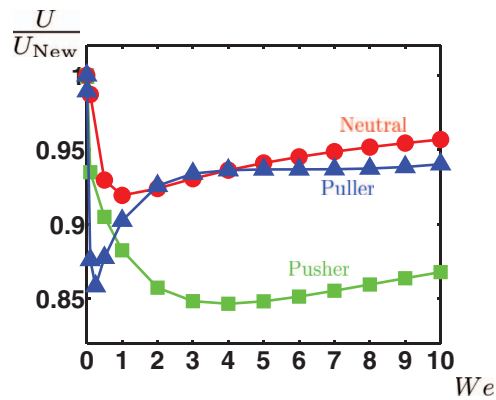


FIG. 2. Nondimensional swimming speed, U , of the swimmer as a function of the Weissenberg number, We , for pusher $\alpha = -5$ (squares, green), puller $\alpha = 5$ (triangles, blue) and neutral swimmer $\alpha = 0$ (circles, red). The swimming speed is scaled by its corresponding value in the Newtonian fluid, U_{New} .

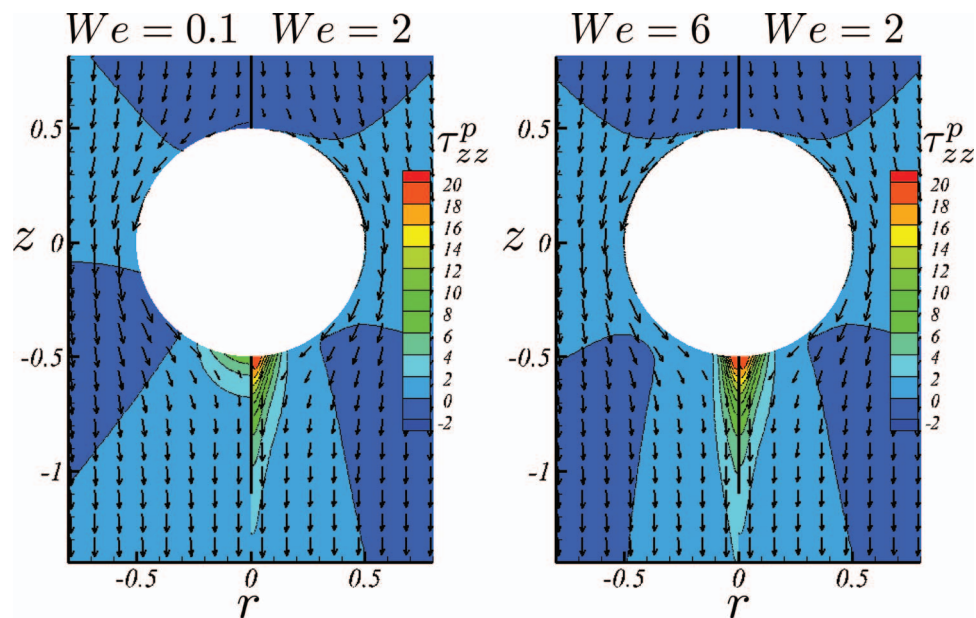


FIG. 3. Distribution of the τ_{zz}^p component of the polymeric stress for the neutral squirmer and three values of the Weissenberg number, $We = 0.1, 2,$ and 6 . (Left: $We = 0.1$ and 2 . Right: $We = 6$ and 2 .)

the region of largest elongation becomes narrower and closer to the pole, leading to a reduced elastic resistance and consistent with the results of Fig. 2.

The polymer contribution for the pusher swimmer is displayed in Fig. 4 (left). In this case, the kinematics of surface deformation draws fluid from the side and pushes it towards the two poles, resulting in strong elongational flows at the poles (see Fig. 1). Such flow aligns the polymer chains near the poles in the swimming direction, leading to high elongational viscosities in the front of and behind the squirmer. Comparing Figs. 3 and 4, we see that the magnitude of τ_{zz} on the back is much larger in the case of pushers. This is further illustrated in Fig. 5 where we display the value of the normal polymeric stress along the symmetry axis. It is noteworthy that for the pusher swimmer, significant τ_{zz} is evident also in the region ahead of the body. In this case, the stretched polymers might contribute an elastic driving force on the swimmer. However, the magnitude of τ_{zz} at the front is lower than that behind, and thus the net effect is that of an additional drag. Note that for the neutral squirmer, the region of polymer elongation becomes narrower at large We and we observe a recovery of the swimming speed.

We then consider the puller swimmer, which is about 20% faster than the pusher (as seen in Fig. 2). The polymeric stresses in this case are shown in Figs. 4 (right), 5, and 6. The results in Fig. 6 are displayed for $We = 0.5$, corresponding to the minimal swimming speed for the viscoelastic puller (and thus the maximum influence of viscoelastic stresses). In the case of pullers, the inward velocity imposed by the surface deformation on the front and back of the body takes fluid away from the back of the swimmer, and thus stretched fluid is removed from the region behind the body. As shown in Fig. 5, τ_{zz} is smaller for the puller than for the neutral squirmer in the region immediately behind the body. One may thus expect the puller may swim faster than the neutral squirmer. However, large magnitude of τ_{zz} and τ_{rz} are observed in conjunction to the vortex ring, with maximum values attained near the swimmer surface. Both components contribute to a polymeric (elastic) force applied on the swimmer as indicated by the gray arrows in Fig. 6. We observe an elongational flow generated on top of the vortex ring, and polymer chains stretched by such flow result in a strong force opposing the swimmer motion, possibly explaining why the puller swimmer is not faster than the neutral squirmer despite displaying a significant reduction in polymer stretching behind its body.

To summarize, we observe elongational flows generated by all three swimmers around their bodies (neutral squirmer, pusher, and puller). The strength, orientation, and position of the

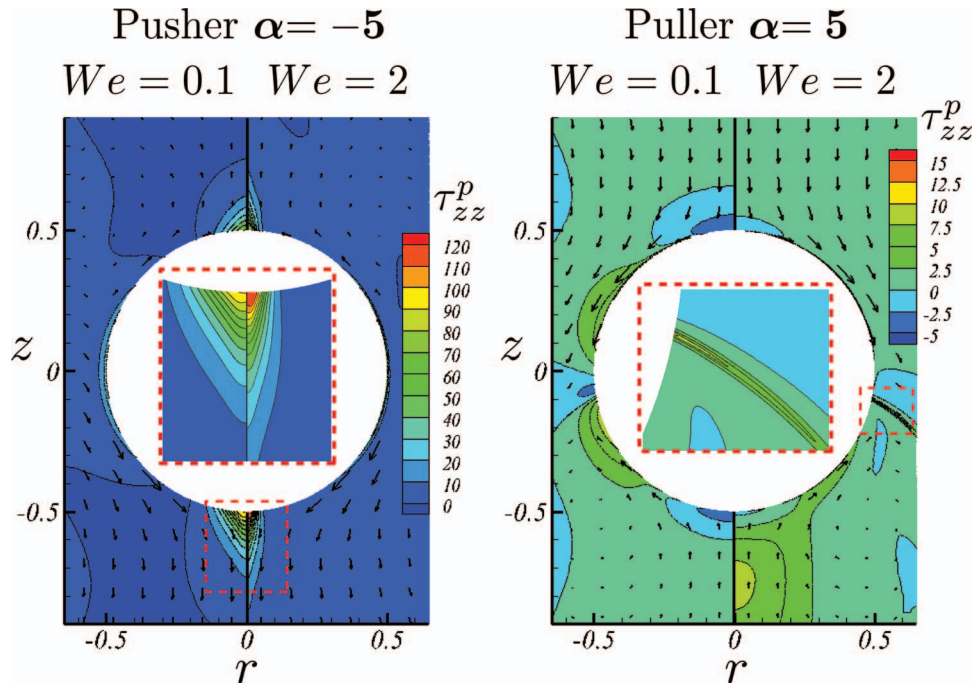


FIG. 4. Distribution of the τ_{zz}^p component of the polymeric stress for the pusher (left) and puller (right) swimming in the viscoelastic fluid. For both gaits, $We = 0.1$ and $We = 2$ are chosen for comparison. The inset plots show regions with high value of τ_{zz}^p .

elongational flow is dependent on the swimming gaits. Such flows yield increasing elongational viscosities which serve as an additional elastic force, possibly positive or negative, to the locomotion. For the three gaits considered here, the force is predominantly resistive, thus impeding locomotion. These computational results are in agreement with a recent experimental study of swimming *Caenorhabditis elegans* in polymeric fluids where the authors suggest that elongational viscosities can explain the measured decrease in swimming speeds.²³

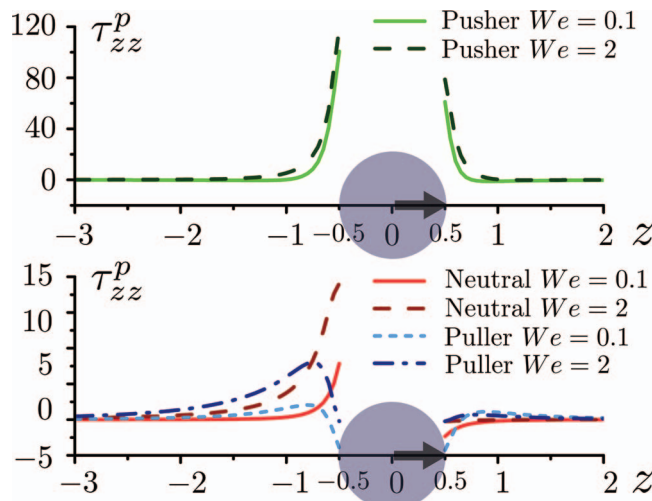


FIG. 5. Distribution of the τ_{zz}^p component of the polymeric stress along the symmetry axis. Shaded circles and arrows indicate the squirmer and its swimming direction. Data for the pusher are shown in the top whereas the neutral squirmer and the puller are reported at the bottom. The solid and short-dashed lines correspond to $We = 0.1$, the long-dashed and dotted-dashed lines to $We = 2$.

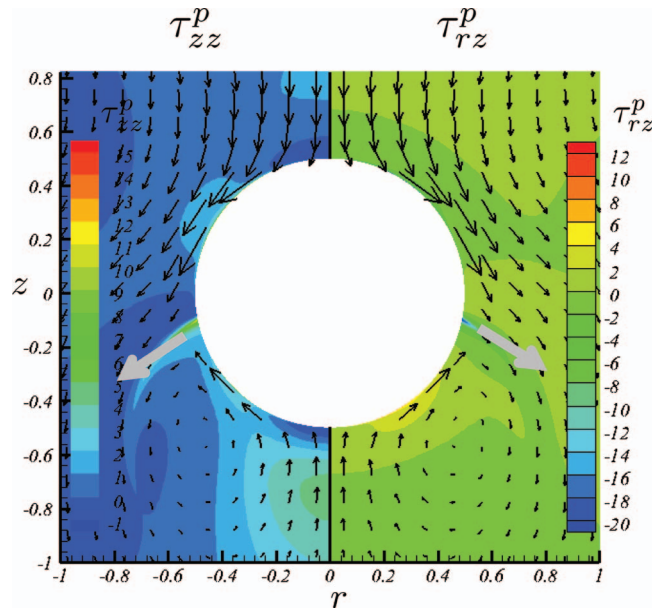


FIG. 6. Distribution of the τ_{zz}^p and τ_{rz}^p components of the polymeric stress for pullers in the viscoelastic fluid with $We = 0.5$. Both the τ_{zz}^p and τ_{rz}^p components lead to a net polymeric (elastic) force indicated by the gray arrows, hindering locomotion. The location of this elastic forces is right above the vortex ring, implying that they are generated by the elongational flow.

V. SWIMMING POWER IN VISCOELASTIC FLUIDS

The mechanical power, \mathcal{P} , expended by the spherical squirmer is reported as a function of the Weissenberg number, We , for the three different gaits under investigation in Fig. 7. When considering dimensional quantities, we observe that both the puller and pusher require significantly more power than the neutral squirmer due to the strong vortex rings (see Fig. 1). Indeed, as reported in Ref. 9, \mathcal{P} grows quadratically with the dipole magnitude α . In order to factor out the influence of the swimming gait on the power expenditure, thereby isolating the effect of elasticity on the energy budget, we normalize the power with its corresponding value in the Newtonian fluid, termed \mathcal{P}_{New} . In Fig. 7, we observe a significant reduction in power in the viscoelastic fluid for all gaits; \mathcal{P} decreases first rapidly in the range $We \in [0, 2]$, and tends to an asymptotic value when further

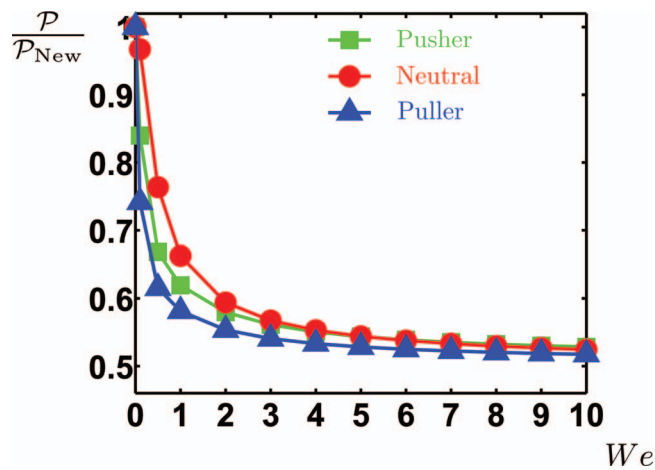


FIG. 7. Swimming power, \mathcal{P} , for pusher (squares, green), puller (triangles, blue) and neutral (circles, red) squirmers, nondimensionalized by the swimming power in the Newtonian case, \mathcal{P}_{New} . The power consumption of swimming in the Newtonian fluid are equal to $\mathcal{P}_{\text{New}} = 8/3\pi$ (neutral squirmer) and $\mathcal{P}_{\text{New}} = 36\pi$ (both pusher and puller).

increasing the polymer relaxation time. The limiting value of \mathcal{P} for $We \gg 1$ is close to half the value of the Newtonian case ($We = 0$), namely, $\mathcal{P}|_{We \gg 1}/\mathcal{P}_{New} \approx 0.5$. The result is in agreement with the asymptotic analysis of Ref. 20 which predicts $\mathcal{P}|_{We \gg 1}/\mathcal{P}_{New} = \beta$ ($\beta = 0.5$ for the computations presented here).

As we will show below, the component of the power consumption associated with the Newtonian solvent is almost constant with variations in We , while the contribution of the polymeric stresses decreases significantly (up to one order of magnitude decrease at large We). Since, for $\beta = 0.5$, the Newtonian and polymeric contribution are the same for $We = 0$, the power at large Weissenberg numbers is about half that in a Newtonian fluid.

To probe the power saving for microswimmers in viscoelastic fluids, we decompose the power into three parts. First, we use the divergence theorem to transform the total power, \mathcal{P} , which is the integral of the stress at the surface times the swimming speed, into a volume integral as done in Ref. 7

$$\mathcal{P} = - \int_S \mathbf{u} \cdot \boldsymbol{\tau} \cdot \mathbf{n} dS = \int_V \nabla \cdot (\mathbf{u} \cdot \boldsymbol{\tau}) dV, \quad (9)$$

where \mathbf{n} is the unit normal outward the swimmer surface S , \mathbf{u} is the velocity in the laboratory frame, and $\boldsymbol{\sigma}$ is the stress tensor introduced above. Rearranging the integrand, one can write

$$\nabla \cdot (\mathbf{u} \cdot \boldsymbol{\tau}) = \beta\mu\omega^2 + 2\beta\mu(\nabla\mathbf{u} : \nabla\mathbf{u}) + \mathbf{E} : \boldsymbol{\tau}^p. \quad (10)$$

Consequently, \mathcal{P} is found to be the sum of three contributions, $\mathcal{P} = \mathcal{P}_\Omega + \mathcal{P}_{DV} + \mathcal{P}_P$: a component related to the flow vorticity, $\mathcal{P}_\Omega = \int_V \beta\mu\omega^2 dV$, a component related to the velocity gradient, $\mathcal{P}_{DV} = \int_V 2\beta\mu(\nabla\mathbf{u} : \nabla\mathbf{u}) dV$, and a polymeric component, $\mathcal{P}_P = \int_V \mathbf{E} : \boldsymbol{\tau}^p dV$, where \mathbf{E} is the rate-of-strain tensor. The component related to the velocity derivative, \mathcal{P}_{DV} , is only dependent on the tangential velocity distribution we impose on the surface and thus is only a function of α . This can be seen by re-writing

$$\mathcal{P}_{DV} = 2\beta\mu \int_V (\nabla\mathbf{u}) : (\nabla\mathbf{u}) dV = -2\beta\mu \int_S \mathbf{n} \cdot (\mathbf{u} \cdot \nabla\mathbf{u}) dS. \quad (11)$$

The three different contributions to the total consumed power are displayed in Fig. 8 as a function of the Weissenberg number, We , for two swimming gaits, neutral swimmer (left panel) and puller (right panel). Energetic results for pushers are qualitatively similar to those for pullers. First note that for $We = 0$ and our choice $\beta = 0.5$, the power component due to the polymeric stress is $\mathcal{P}_P = \mathcal{P}_\Omega + \mathcal{P}_{DV}$. As seen from the definition of the polymeric model, $\boldsymbol{\tau}^p$ reduces to Newtonian stress $(1 - \beta)(\nabla\mathbf{u} + \nabla\mathbf{u}^T)$ when $We = 0$ in Eq. (5).

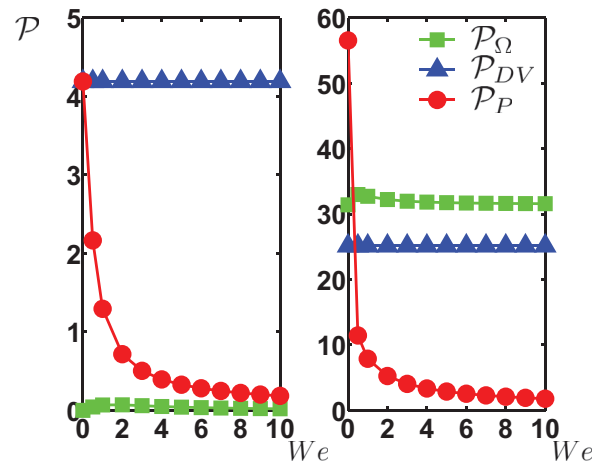


FIG. 8. Contributions to the total power expended by swimming, \mathcal{P} , versus Weissenberg number We , $\beta = 0.5$, for neutral swimmer (left) and puller (right). The three contributions are defined as: $\mathcal{P}_\Omega = \int_V \beta\mu\omega^2 dV$, $\mathcal{P}_{DV} = \int_V 2\beta\mu(\nabla\mathbf{u} : \nabla\mathbf{u}) dV$, and $\mathcal{P}_P = \int_V \mathbf{E} : \boldsymbol{\tau}^p dV$.

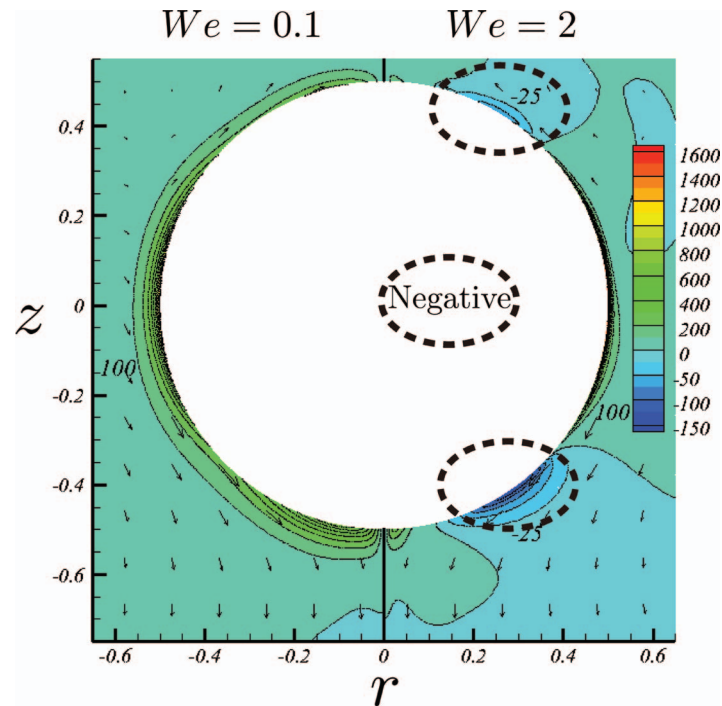


FIG. 9. Polymeric power density, D_P , for pushers in fluids with $We = 0.1$ (left) and $We = 2$ (right). Dotted elliptical circles mark areas with negative values of D_P . The values of D_P along the swimmer surface are displayed in Fig. 10.

For a fixed mode of surface motion, \mathcal{P}_{DV} , is strictly constant with We since it depends only on the values of the velocity at the surface (see Eq. (11)). For both gaits, we observe computationally that the vorticity contribution, \mathcal{P}_Ω , shows little variations with We . The major contribution to the reduction in swimming power stems thus from the significant reduction of the polymeric part, \mathcal{P}_P , with increasing values of the Weissenberg number.

The contribution of polymeric stresses to the consumed power is the double dot product of two tensors, the rate-of-strain tensor, $\mathbf{E} = \frac{1}{2}(\nabla\mathbf{u} + (\nabla\mathbf{u})^T)$, and the polymeric stress tensor, $\boldsymbol{\tau}^P$. Polymer chains get stretched by the rate-of-strain. In fluids with low relaxation times, polymeric stretching occurs immediately, resulting in high spatial correlation between the polymeric stress tensor and the rate-of-strain tensor. Thus, the product of the two tensors takes large values. In contrast, for fluids with large relaxation times, polymer chains get fully stretched at a position far away from where they get excited, and the spatial correlation of the two tensors decreases. Polymeric deformation and rate-of-strain become therefore separated in space as We increases, which gives a systematically smaller power consumption, as observed computationally.

In Fig. 9, we plot the power density, $D_P = 2\pi|r|\mathbf{E} : \boldsymbol{\tau}^P$, for the spherical pusher for two different values of We . When $We = 0.1$ (left half of the figure), large values of D_P are observed in the region very close to the swimmer, especially in the equatorial region. This is the region where most of the energy is expended to elongate the polymers. A region of positive D_P also exists near the equatorial $z = 0$ plane for the case with $We = 2$ shown on the right, although of reduced size. In addition, negative density can be seen on the planes $z \approx \pm 0.4$ (indicated by elliptical circles in the figure), which can also be clearly identified in Fig. 10 where we display the value of D_P evaluated along the surface of the pusher. These areas of negative power density produce further decrease of the total expended power by providing energy to the system. This energy analysis allows us to understand the reduction in swimming power observed in viscoelastic fluids for any type of surface deformation considered.

We finally consider the situation of locomotion at constant power. Some bacteria have been observed to swim with kinematics consistent with constant-power conditions,⁴⁹ and it is thus interesting to consider the swimming speed which would be attained by squirmers if they were under the constraints of expending the same power as in a Newtonian fluid (the results in Fig. 2 were obtained

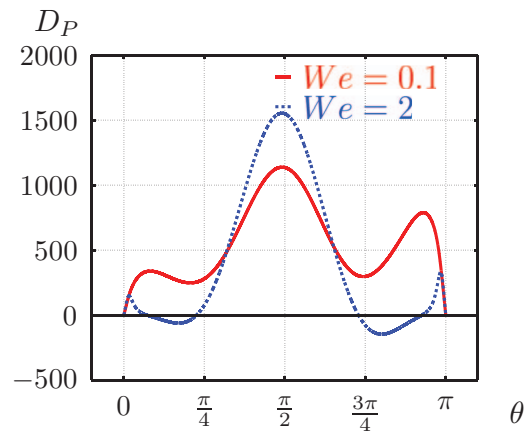


FIG. 10. Spatial distribution of polymeric power density, D_P , along the surface of pushers in viscoelastic fluids with $We = 0.1$ (solid line, red) and 2 (dashed line, blue); θ is defined in Sec. II, as the angle between the swimming direction and the position vector of each point.

at constant intensity of the velocity at the boundary). The swimming speed obtained rescaling the previous data to obtain constant-power locomotion is displayed in Fig. 11. To calculate the velocity at constant power, we need to increase the value of the surface velocity B_1 to account for the power-saving in polymeric fluid discussed above. If we use B'_1 to denote the new value of B_1 , constant power requirement is written as $(B'_1)^2 \mathcal{P}|_{We(B'_1)} = B_1^2 \mathcal{P}_{\text{New}}$, where $We(B'_1) = \frac{\lambda B'_1}{D} = \frac{B'_1}{B_1} We$; we use a simple interpolation from our computational results in order to obtain $\mathcal{P}|_{We(B'_1)}$. Thus, the swimming speed with constant power is computed as $\tilde{U} = \frac{B'_1}{B_1} U|_{We(B'_1)}$. As can be seen in Fig. 11, \tilde{U} is found to be systematically larger than that in the Newtonian conditions for all the cases considered, and the swimming speed systematically increases with the Weissenberg number. The puller and the neutral squirmer are about 20% faster than the pusher.

VI. SWIMMING EFFICIENCY IN VISCOELASTIC FLUIDS

The hydrodynamic efficiency of squirmers in viscoelastic fluid is displayed in Fig. 12. The efficiency is defined as the ratio between the rate work needed to pull a sphere of same size in the

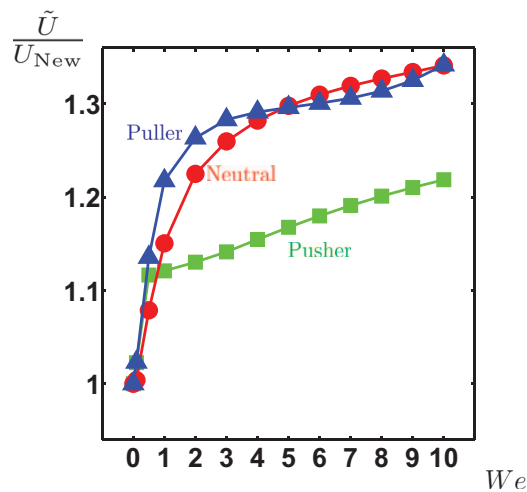


FIG. 11. Swimming speed \tilde{U} , scaled to ensure locomotion at constant power, versus Weissenberg number, We , for $\beta = 0.5$. Nondimensional form $\frac{\tilde{U}}{U_{\text{New}}}$ is plotted for the three swimming gaits: neutral (circles, red), puller (triangles, blue), and pusher (squares, green).

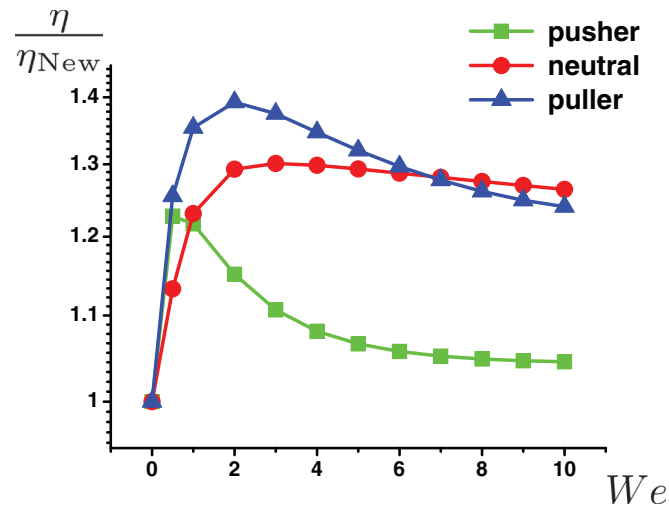


FIG. 12. Swimming efficiency, η , normalized by the corresponding value for Newtonian swimming, η_{New} , versus Weissenberg number, We . The efficiencies of swimming in the Newtonian fluid are equal to $\eta_{\text{New}} = 0.5$ (neutral squirmer) and $\eta_{\text{New}} = 0.037$ (both pusher and puller).

same fluid at the swimming speed U and the swimming power \mathcal{P} of a self-propelled swimmer^{8,50}

$$\eta = \frac{FU}{\mathcal{P}}, \quad (12)$$

where F is the force required to drag the spherical squirmer body at the speed U . Similar to what we did for the power consumption, the efficiency is normalized in Fig. 12 by its Newtonian value. We observe that all swimmers have a higher swimming efficiency than in a Newtonian fluid. For all three gaits, as We increases from 0, the scaled efficiency first increases rapidly with We , then decreases asymptotically. We can thus identify an optimal We number corresponding to the maximum efficiency; this is around 2 for the neutral and puller swimmer and around 0.5 for the pusher.

VII. VELOCITY DECAY IN VISCOELASTIC FLUIDS

Because of its implications to collective cell behavior,^{8,23} it is of interest to investigate the effect of the fluid elasticity on the spatial decay of the flow perturbation induced by the swimming motion. We compute the axial velocity along the symmetry axis of the domain for the pusher and puller (similar analysis was carried out for the neutral swimmer in our previous paper²⁴). The velocity decays with a power-law behavior, $|u| \sim 1/r^\gamma$, with $\gamma = 2$ in the Newtonian case for both pushers and pullers, as sufficiently far away from the cell the higher order terms ($1/r^3$ and $1/r^4$) give negligible contribution to the flow field ($\gamma = 3$ in the neutral potential flow case). In the non-Newtonian case, we estimate the value of γ by fitting a power law to the numerical results in a measurement region extending from about $r \approx 5D$ to the end of the computational domain. The estimated values of γ are displayed in Fig. 13 as a function of the Weissenberg number, We . We see clearly that the velocity always decays faster in viscoelastic fluids than in the Newtonian fluid. For both pusher and puller, γ is not monotonically increasing when with We , but instead reaches a maximum value at intermediate Weissenberg numbers. The maximum value of γ is seen to take place as We is around 5 for the pusher and around 1 for the puller, which approximately corresponds with the values of the Weissenberg numbers at which the swimming speed, U , is minimum for both gaits (although slightly above). We thus observe a negative correlation between the swimming speed and the velocity decay rate. We further note that the velocity decay rate is larger for the pusher than for the puller, which is consistent with our observation of the negative correlation as the swimming speed of a pusher is smaller than that of a puller.

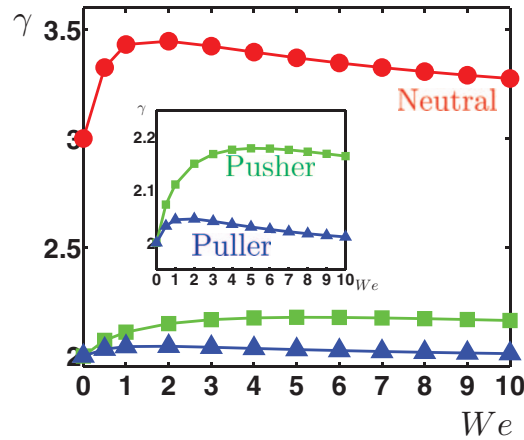


FIG. 13. Power law exponent, γ , for spatial decay of the axial velocity along the axis of the domain ($r = 0$) ($|u| \sim r^{-\gamma}$, see text), as a function of the Weissenberg number, We . The inset plot highlights the difference between pusher and puller.

VIII. STRESSLET IN VISCOELASTIC FLUIDS

In this final section, we address how the viscoelastic modification of the squirming motion would affect the rheology of an active suspension of squirmers. When the size of the microorganisms is much smaller than the scale of the flow field under consideration, it is convenient to use a continuum model of the active suspension. The first order correction to the bulk viscosity in terms of the volume fraction of swimmers is then given by the stresslet associated with an individual swimmer. Batchelor⁵¹ derived a relation between the bulk stress and the conditions at the surfaces of individual particles embedded in a Newtonian solvent (his original formulation is given in dimensional form and we present the nondimensional version here using the scaling we introduced in Sec. II). The bulk stress $\hat{\sigma}$ is given by

$$\hat{\sigma} = \mathbf{I} \cdot \mathbf{T} + 2\bar{\mathbf{E}} + \sigma', \quad (13)$$

where $\mathbf{I} \cdot \mathbf{T}$ is an isotropic tensor, i.e., $\mathbf{I} \cdot \mathbf{T} = \hat{\sigma}_{kk} \mathbf{I}$, $\bar{\mathbf{E}}$ is the volume-averaged rate-of-strain tensor ($\bar{E}_{ij} = \frac{1}{2V} \int_V \left(\frac{\partial u_i}{\partial x_j} + \frac{\partial u_j}{\partial x_i} \right) dV$, where V is the volume occupied by the fluid and the particles) and σ' represents the disturbance stress due to the presence of squirmers; see also Ref. 52 for the application to active suspensions in Newtonian fluids. The particle bulk stress σ' induced by force- and torque-free particles (such as swimmers) in the volume V can be expressed as

$$\sigma' = \frac{1}{V} \sum \mathbf{S}, \quad (14)$$

$$\mathbf{S} = \int_{A_S} \left[\frac{1}{2} \{ (\boldsymbol{\sigma} \cdot \mathbf{n}) \mathbf{x} + \mathbf{x} (\boldsymbol{\sigma} \cdot \mathbf{n}) \} - \frac{1}{3} \mathbf{x} \cdot \boldsymbol{\sigma} \cdot \mathbf{n} \mathbf{I} - (\mathbf{u} \mathbf{n} + \mathbf{n} \mathbf{u}) \right] dA. \quad (15)$$

The stress is thus given by the volume average of the so-called stresslet \mathbf{S} , where the sum is taken over all the swimmers. The stresslet \mathbf{S} is defined Eq. (15) where $\boldsymbol{\sigma}$ is the stress tensor, A_S is the surface of one of the squirmers, \mathbf{n} is the unit outward normal vector, \mathbf{x} is the position vector, and \mathbf{I} is the unit tensor.

Ishikawa and coworkers¹⁷ exploited the formulation above to study the stresslet \mathbf{S} of a single squirmer and a pair of squirmers in the Newtonian fluid both analytically and numerically. They showed that for single squirmers

$$\mathbf{S} = \frac{1}{3} \pi (3\mathbf{e} \mathbf{e} - \mathbf{I}) B_2, \quad (16)$$

where \mathbf{e} is the swimming direction and B_2 the second squirming mode defined in Sec. II. The assumption of axisymmetric bodies makes the off-diagonal part of \mathbf{S} zero. In a Newtonian fluid, the

first mode B_1 determines the swimming speed while B_2 the stresslet magnitude; the stresslet of a neutral squirmer ($B_2 = 0$) is therefore zero.

In order to derive a similar formalism for a squirmer in a non-Newtonian flow, we consider the additional polymeric contribution, $\boldsymbol{\tau}^p$, to the Newtonian stress, $\boldsymbol{\sigma} = -p\mathbf{I} + \beta(\nabla\mathbf{u} + \nabla\mathbf{u}^T) + \boldsymbol{\tau}^p$. The same derivation as in Refs. 51 and 53 can be performed for non-Newtonian fluids, see, for example, Ref. 54. In our case, we seek an expression for $\boldsymbol{\sigma}'$

$$\hat{\boldsymbol{\sigma}} = \mathbf{I} \cdot \mathbf{T} + 2\beta\bar{\mathbf{E}} + \bar{\boldsymbol{\tau}}_p + \boldsymbol{\sigma}', \quad (17)$$

where $\bar{\boldsymbol{\tau}}_p$ is the volume average of the polymeric stress ($\bar{\boldsymbol{\tau}}_p = \frac{1}{V} \int_V \boldsymbol{\tau}_p d\mathbf{V}$). The total bulk stress can be written as⁵¹

$$\hat{\boldsymbol{\sigma}} = \frac{1}{V} \int_{V-V_s} \{-p\mathbf{I} + \beta(\nabla\mathbf{u} + \nabla\mathbf{u}^T) + \boldsymbol{\tau}_p\} dV + \frac{1}{V} \int_{V_s} \boldsymbol{\sigma} dV, \quad (18)$$

where V_s is the volume occupied by the squirmer. Combining Eqs. (17) and (18), we have

$$\boldsymbol{\sigma}' = -\frac{1}{V} \int_{V_s} \beta(\nabla\mathbf{u} + \nabla\mathbf{u}^T) dV - \frac{1}{V} \int_{V_s} \boldsymbol{\tau}_p dV + \frac{1}{V} \int_{V_s} \boldsymbol{\sigma} dV. \quad (19)$$

The volume integral of the Newtonian contribution to the total stress inside the squirmer is re-written as a surface integral by applying the divergence theorem: the first term on the right hand side of Eq. (19) becomes $-\frac{1}{V} \int_{A_s} \beta(\mathbf{u}\mathbf{n} + \mathbf{n}\mathbf{u}) dA$, whereas the total stress inside the particles contributes to the stresslet

$$\int_{V_s} \boldsymbol{\sigma} dV = \int_{A_s} (\boldsymbol{\sigma} \cdot \mathbf{n}) \mathbf{x} dA - \int_{V_s} (\nabla \cdot \boldsymbol{\sigma}) \mathbf{x} dV, \quad (20)$$

where we have assumed $\nabla \cdot \boldsymbol{\sigma} = 0$ inside the solid body. For a swimming squirmer which is force-free and torque-free, $(\boldsymbol{\sigma} \cdot \mathbf{n}) \mathbf{x} = \frac{1}{2} \{(\boldsymbol{\sigma} \cdot \mathbf{n}) \mathbf{x} + \mathbf{x}(\boldsymbol{\sigma} \cdot \mathbf{n})\} - \frac{1}{3} \mathbf{x} \cdot \boldsymbol{\sigma} \cdot \mathbf{n} \mathbf{I}$ as in Ref. 17. Finally, we obtain the new definition of the stresslet

$$\mathbf{S} = \int_{A_s} \left[\frac{1}{2} \{(\boldsymbol{\sigma} \cdot \mathbf{n}) \mathbf{x} + \mathbf{x}(\boldsymbol{\sigma} \cdot \mathbf{n})\} - \frac{1}{3} \mathbf{x} \cdot \boldsymbol{\sigma} \cdot \mathbf{n} \mathbf{I} - \beta(\mathbf{u}\mathbf{n} + \mathbf{n}\mathbf{u}) \right] dA - \int_{V_s} \boldsymbol{\tau}^p dV. \quad (21)$$

The stresslets \mathbf{S} computed from Eq. (21) for the pusher ($\alpha = -5$), puller ($\alpha = 5$), and neutral squirmer ($\alpha = 0$) are displayed in Fig. 14. Because of axisymmetry, there are only two non-zero components of \mathbf{S} , namely, the rr component in the direction normal to the swimming direction and the zz component in the swimming direction.

First, we see that for the pusher and puller the magnitude of both the rr and zz components decreases monotonically with increasing We , and reaches an asymptotic value (while keeping the same sign). This corresponds to a maximum decrease of approximately 20% with respect to the Newtonian value at $We = 10$. This implies that a dilute suspension of swimming cells will have a weaker rheological effect in a viscoelastic fluid.

The decrease in the stresslet can tentatively be explained by the fact that the polymeric stress always opposes the flow which generates it. Let us consider the zz component of a pusher as an example; in that case, the tangential velocity on the surface pushes the fluid away from the cell along the swimming direction as shown in Fig. 1, resulting in an extensional flow in front and behind the cell body with a consequent negative zz component of the stresslet. Simultaneously, the extensional flow produces strong positive polymeric stresses (see Fig. 4) counteracting the effect created by the wall actuation, and hence decreasing the net stress; the impact on the rr component can be explained in a similar fashion. Note that for both the pusher and puller, the magnitude of the zz component is approximately twice that of the rr component, as can be seen from Eq. (16).

Interestingly, we also observe in Fig. 14 that for the neutral squirmer, which has zero stresslet in the Newtonian limit, viscoelastic stresses induce a non-zero stresslet. The value of the rr component is lower than that of the zz component and of same sign. Considering two squirmers swimming in the same direction side by side, at leading order in their separation distance they have no influence on each other in a Newtonian fluid but will repel each other due to the negative value of the rr component of the stresslet. Similarly, two neutral squirmers swimming in line along the same

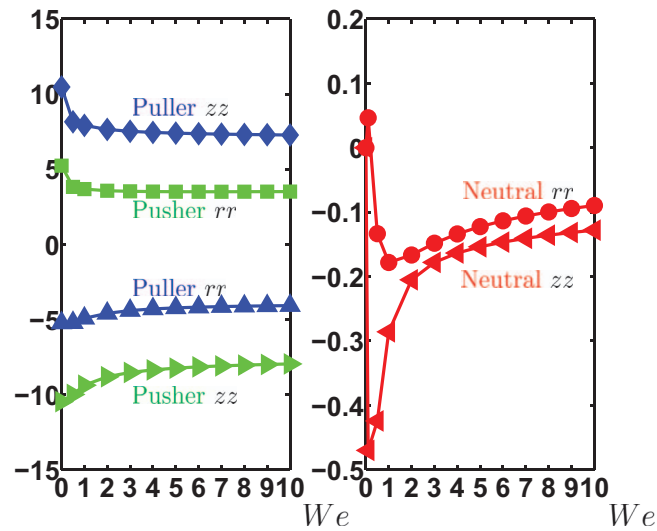


FIG. 14. Stresslets induced by swimmers in viscoelastic fluids: rr and zz components of the tensor S , Eq. (21), for different swimming gaits. Left: pusher ($\alpha = -5$) and puller ($\alpha = 5$). Right: neutral squirmer ($\alpha = 0$).

swimming direction will tend to increase their relative distance owing to the negative value of the zz component of the stresslet. The peak value of the rr and zz components occur at $We \approx 1$, at which the minimum swimming speed of the neutral squirmer appears, as well as the fastest velocity decay. Interestingly, this viscoelastic repulsion between swimming squirmers has the sign opposite to the viscoelastic attraction observed between sedimenting spheres in polymeric fluids.

IX. CONCLUSION

In the current paper, we numerically compute the swimming speed, power, and hydrodynamic efficiencies of model ciliated cells swimming in a viscoelastic Giesekus fluid. We use the squirmer model where the self-propulsion is driven by tangential surface deformation and consider three types of boundary conditions to mimic swimming gaits typical of cell locomotion (potential squirmer, pusher, and puller) all having the same swimming speed in a Newtonian fluid. The characteristics of the flow and of the polymeric stress are examined to help understand our computational results.

For constant magnitude of the surface deformation velocity, we show that the swimming speed decreases in the viscoelastic fluid compared its the Newtonian value for all cases considered, with a minimum obtained at intermediate values of the Weissenberg number. Neutral swimmer and puller have the highest velocity, whereas the pusher is about 15% slower. For the potential squirmer and the pusher, the reduced self-propulsion is explained by the accumulation of highly stretched polymers behind the body. For low values of the polymer relaxation times, $We \lesssim 1$, the stretching of the polymers increases hence the initial decrease in the swimming speed. For the largest values of the Weissenberg number, however, the region of stretched polymers behind the swimmer becomes thinner and the induced elastic resistance decreases, thus explaining the slow recovery of the swimming speed. In the case of pullers, a different velocity field is created and stretched polymers are advected away from the cell on the sides. This induces a force with a component both in the radial and axial direction, the latter explaining the reduced swimming speed. Similar kinematic analysis could be used to provide detailed guidelines for the design of efficient swimmers in viscoelastic fluids - the basic design principle consisting in reducing the accumulation of stretched polymers at the cell surface in the direction of motion.

Along with the decrease in swimming speed, we observe a significant reduction of swimming power in all cases. To understand this observation, we analytically decompose the expression for the power expended by cells swimming in viscoelastic fluids into three contributions (integrals over the flow domain): one associated to the vorticity induced in the flow, one only set by the surface

deformation, and one related to the polymeric stresses. In this way, we are able to clearly identify the reduction in consumed power with a reduction in the polymeric contribution and interpret the observed reduction in power as due to an increasing spatial de-correlation between the flow shear and the induced polymer deformation. In addition, we observe regions of negative power density indicating that the polymers in the fluid have the capacity to first transform the mechanical energy into potential energy (polymer deformation), and then feed it back to the fluid thus reducing the consumed power. We also consider the hydrodynamic efficiencies and show that self-propulsion is always more efficient in a viscoelastic fluid, with a maximum relative efficiency obtained for intermediate values of the Weissenberg number.

We further investigate the influence of the fluid elasticity on the decay rate of the perturbation velocity induced by the squirmer. We find that the decay rate is faster in viscoelastic fluid and is larger for the pusher than for the puller. Finally, to address the influence of viscoelasticity on the rheology of an active suspension of swimmers, we extract from the computational results the stresslet associated with an isolated swimmer. Notably, viscoelasticity induces a non-zero stresslet for the potential squirmer (rigorously equal to zero in the Newtonian case). As a difference, the magnitude of the stresslet for both pushers and pullers decrease by about 20%. These results present a first quantitative step toward an understanding of the dynamics and rheology of active suspensions in viscoelastic fluids.

ACKNOWLEDGMENTS

Funding by VR (the Swedish Research Council) to L.B., by the Linné Flow Centre at KTH, and the US National Science Foundation (Grant No. CBET-0746285 to E.L.) is gratefully acknowledged. Computer time provided by SNIC (Swedish National Infrastructure for Computing) is also acknowledged.

- ¹L. J. Fauci and R. Dillon, "Biofluidmechanics of reproduction," *Ann. Rev. Fluid Mech.* **38**, 371–394 (2006).
- ²T. J. Pedley and J. O. Kessler, "Hydrodynamic phenomena in suspensions of swimming microorganisms," *Ann. Rev. Fluid Mech.* **24**, 313–358 (1992).
- ³N. A. Hill and T. J. Pedley, "Bioconvection," *Fluid Dyn. Res.* **37**, 1–20 (2005).
- ⁴J. W. Costerton, K. J. Cheng, G. G. Geesey, T. I. Ladd, J. C. Nickel, M. Dasgupta, and T. J. Marrie, "Bacterial biofilms in nature and disease," *Ann. Rev. Microbiol.* **41**, 435–464 (1987).
- ⁵A. Hamel, C. Fisch, L. Combettes, P. Dupuis-Williams, and C. N. Baroud, "Transitions between three swimming gaits in paramecium escape," *Proc. Natl. Acad. Sci. U.S.A.* **108**, 7290–7295 (2011).
- ⁶C. Brennen and H. Winet, "Fluid mechanics of propulsion by cilia and flagella," *Ann. Rev. Fluid Mech.* **9**, 339–398 (1977).
- ⁷H. A. Stone and A. D. T. Samuel, "Propulsion of microorganisms by surface distortions," *Phys. Rev. Lett.* **77**, 4102–4104 (1996).
- ⁸E. Lauga and T. R. Powers, "The hydrodynamics of swimming microorganisms," *Rep. Prog. Phys.* **72**, 1–36 (2009).
- ⁹J. R. Blake, "A spherical envelope approach to ciliary propulsion," *J. Fluid Mech.* **46**, 199–208 (1971).
- ¹⁰V. Magar and T. J. Pedley, "Average nutrient uptake by a self-propelled unsteady squirmer," *J. Fluid Mech.* **539**, 93–112 (2005).
- ¹¹S. Michelin and E. Lauga, "Optimal feeding is optimal swimming for all péclet numbers," *Phys. Fluids* **23**, 1–13 (2011).
- ¹²L. H. Cisneros, R. Cortez, C. Dombrowski, R. E. Goldstein, and J. O. Kessler, "Fluid dynamics of self-propelled microorganisms, from individuals to concentrated populations," *Exp. Fluids* **43**, 737–753 (2007).
- ¹³J. P. Hernandez-Ortiz, C. G. Stoltz, and M. D. Graham, "Transport and collective dynamics in suspensions of confined swimming particles," *Phys. Rev. Lett.* **95**, 204501 (2005).
- ¹⁴T. Ishikawa and T. J. Pedley, "Coherent structures in monolayers of swimming particles," *Phys. Rev. Lett.* **100**(8), 088103 (2008).
- ¹⁵H. Moore, K. Dvorakova, N. Jenkins, and W. Breed, "Exceptional sperm cooperation in the wood mouse," *Nature (London)* **418**, 174–177 (2002).
- ¹⁶D. Saintillan and M. J. Shelley, "Instabilities, pattern formation, and mixing in active suspensions," *Phys. Fluids* **20**, 123304 (2008).
- ¹⁷T. Ishikawa, M. P. Simmonds, and T. J. Pedley, "Hydrodynamic interaction of two swimming model micro-organisms," *J. Fluid Mech.* **568**, 119–160 (2006).
- ¹⁸D. Giacché and T. Ishikawa, "Hydrodynamic interaction of two unsteady model microorganisms," *J. Theor. Biol.* **267**, 252–263 (2010).
- ¹⁹T. Ishikawa and M. Hota, "Interaction of two swimming paramecia," *J. Exp. Biol.* **209**, 4452–4463 (2006).
- ²⁰E. Lauga, "Propulsion in a viscoelastic fluid," *Phys. Fluids* **19**, 083104 (2007).
- ²¹H. C. Fu, C. W. Wolgemuth, and T. R. Powers, "Swimming speeds of filaments in nonlinearly viscoelastic fluids," *Phys. Fluids* **198**, 587–599 (2009).

- ²²J. Teran, L. Fauci, and M. Shelley, "Viscoelastic fluid response can increase the speed and efficiency of a free swimmer," *Phys. Rev. Lett.* **104**(3), 038101 (2010).
- ²³X. N. Shen and P. E. Arratia, "Undulatory swimming in viscoelastic fluids," *Phys. Rev. Lett.* **106**(20), 208101 (2011).
- ²⁴L. Zhu, M. Do-Quang, E. Lauga, and L. Brandt, "Locomotion by tangential deformation in a polymeric fluid," *Phys. Rev. E* **83**(1), 011901 (2011).
- ²⁵J. S. Guasto, K. A. Johnson, and J. P. Gollub, "Oscillatory flows induced by microorganisms swimming in two dimensions," *Phys. Rev. Lett.* **105**, 168102 (2010).
- ²⁶K. Drescher, R. E. Goldstein, N. Michel, M. Polin, and I. Tuval, "Direct measurement of the flow field around swimming microorganisms," *Phys. Rev. Lett.* **105**, 168101 (2010).
- ²⁷V. Magar, T. Goto, and T. J. Pedley, "Nutrient uptake by a self-propelled steady squirmer," *Q. J. Mech. Appl. Math.* **56**, 65–91 (2003).
- ²⁸A. Doostmohammadi, R. Stocker, and A. M. Ardekani, "Low-Reynolds-number swimming at pycnoclines," *Proc. Natl. Acad. Sci. U.S.A.* **109**, 3856–3861 (2012).
- ²⁹Z. Lin, J. Thiffeault, and S. Childress, "Stirring by squirmers," *J. Fluid Mech.* **669**, 167–177 (2011).
- ³⁰A. A. Evans, T. Ishikawa, T. Yamaguchi, and E. Lauga, "Orientational order in concentrated suspensions of spherical microswimmers," *Phys. Fluids* **23**, 111702 (2011).
- ³¹R. B. Bird, R. C. Armstrong, and O. Hassager, *Dynamics of Polymeric Liquids. Vol. 1: Fluid Mechanics*, 2nd ed. (Wiley-Interscience, New York, 1987).
- ³²R. B. Bird, C. F. Curtiss, R. C. Armstrong, and O. Hassager, *Dynamics of Polymeric Liquids. Vol. 2: Kinetic Theory*, 2nd ed. (Wiley-Interscience, New York, 1987).
- ³³R. B. Bird, "Useful non-Newtonian models," *Ann. Rev. Fluid Mech.* **8**, 13–34 (1976).
- ³⁴H. Giesekus, "A simple constitutive equation for polymer fluids based on the concept of the deformation-dependent tensorial mobility," *J. Non-Newtonian Fluid Mech.* **11**, 69–109 (1982).
- ³⁵A. N. Beris and B. J. Edwards, "Generalized bracket formulation of viscoelastic flow equations of differential type: A unified approach," *J. Rheol.* **34**, 503–538 (1990).
- ³⁶F. Dupret and J. M. Marchal, "Loss of evolution in the flow of viscoelastic fluids," *J. Non-Newtonian Fluid Mech.* **20**, 143–171 (1986).
- ³⁷A. Souvaliotis and A. N. Beris, "An extended White-Metzner viscoelastic fluid model based on an internal structural parameter," *J. Rheol.* **36**, 241–272 (1992).
- ³⁸R. G. Larson, *Constitutive Equations for Polymer Melts and Solutions* (Butterworths, Boston, 1988).
- ³⁹R. Guénette and M. Fortin, "A new mixed finite element method for computing viscoelastic flows," *J. Non-Newtonian Fluid Mech.* **60**(1), 27–52 (1995).
- ⁴⁰A. W. Liu, D. E. Bornside, R. C. Armstrong, and R. A. Brown, "Viscoelastic flow of polymer solutions around a periodic, linear array of cylinders: Comparisons of predictions for microstructure and flow fields," *J. Non-Newtonian Fluid Mech.* **77**(3), 153–190 (1998).
- ⁴¹J. Sun, M. D. Smith, R. C. Armstrong, and R. A. Brown, "Finite element method for viscoelastic flows based on the discrete adaptive viscoelastic stress splitting and the discontinuous galerkin method: Davss-g/dg," *J. Non-Newtonian Fluid Mech.* **86**(3), 281–307 (1999).
- ⁴²J. M. Marchal and M. J. Crochet, "A new mixed finite element for calculating viscoelastic flow," *J. Non-Newtonian Fluid Mech.* **26**, 77–114 (1987).
- ⁴³F. P. T. Baaijens, "Mixed finite element methods for viscoelastic flow analysis: A review," *J. Non-Newtonian Fluid Mech.* **79**, 361–385 (1998).
- ⁴⁴K. Walters and M. F. Webster, "The distinctive CFD challenges of computational rheology," *Int. J. Numer. Methods Fluids* **43**, 577–596 (2003).
- ⁴⁵W. J. Lunsmann, L. Genieser, R. C. Armstrong, and R. A. Brown, "Finite element analysis of steady viscoelastic flow around a sphere in a tube: Calculations with constant viscosity models," *J. Non-Newtonian Fluid Mech.* **48**(1–2), 63–99 (1993).
- ⁴⁶O. G. Harlen, "The negative wake behind a sphere sedimenting through a viscoelastic fluid," *J. Non-Newtonian Fluid Mech.* **108**(1–3), 411–430 (2002).
- ⁴⁷J. M. Dealy, "Official nomenclature for material functions describing the response of a viscoelastic fluid to various shearing and extensional deformations," *J. Rheol.* **28**, 181–195 (1984).
- ⁴⁸J. M. Dealy, "Official nomenclature for material functions describing the response of a viscoelastic fluid to various shearing and extensional deformations. reprinted version with additions and corrections," *J. Rheol.* **38**, 179–191 (1994).
- ⁴⁹W. R. Schneider and R. N. Doetsch, "Effect of viscosity on bacterial motility," *J. Bacteriol.* **117**, 696–701 (1974).
- ⁵⁰S. Michelin and E. Lauga, "Efficiency optimization and symmetry-breaking in a model of ciliary locomotion," *Phys. Fluids* **22**, 1–20 (2010).
- ⁵¹G. K. Batchelor, "The stress system in a suspension of force-free particles," *J. Fluid Mech.* **41**, 545–570 (1970).
- ⁵²T. Ishikawa, G. Sekiya, Y. Imai, and T. Yamaguchi, "Hydrodynamic interactions between two swimming bacteria," *Biophys. J.* **93**, 2217–2225 (2007).
- ⁵³G. K. Batchelor and J. T. Green, "The determination of the bulk stress in a suspension of spherical particles to order c_2 ," *J. Fluid Mech.* **56**, 401–427 (1972).
- ⁵⁴N. A. Patankar and H. H. Hu, "Rheology of a suspension of particles in viscoelastic fluids," *J. Non-Newtonian Fluid Mech.* **96**(3), 427–443 (2001).